



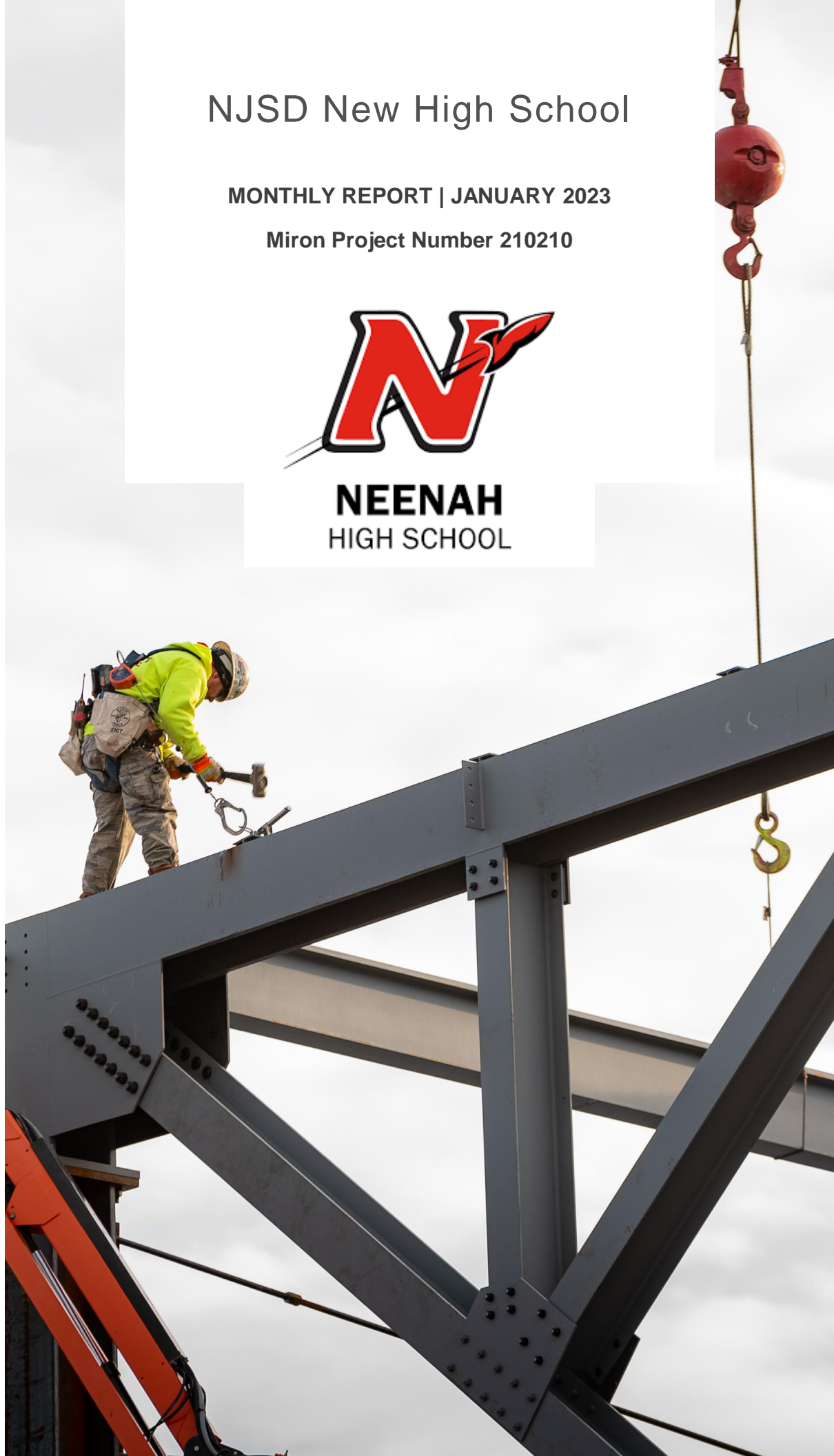
# NJSD New High School

MONTHLY REPORT | JANUARY 2023

Miron Project Number 210210



**NEENAH**  
HIGH SCHOOL





## ABOUT MIRON

### OUR VISION & VALUES

We recently embarked on a journey to define core values that are a more accurate reflection of Miron's culture and what we bring to every project we are honored to undertake.

Through listening sessions with employees from every facet of our organization, we gathered stories, shared experiences, and discovered commonalities, ultimately identifying values authentic to who we are today, and who we want to be for the next 100+ years.

At Miron, we **Stay Grounded, Think Big, Rally Together, Dig Deep, and Build Legacies.**

Our team lives out these core values every day. We put an emphasis on building lasting relationships and fulfilling the commitments we make to our clients, our partners, and each other.

As your partner throughout the construction process, we rely on transparent communication and focus on the details, standing behind our work and providing unparalleled service.

Our *commitment* reaches beyond construction;  
our *passion* brings *dreams* to life.

# Table of Contents

---

Executive Summary

Action Items

Design Items

Quality

Construction Summary

Risk Management

Progress Photos

Glossary of Terms

## **In this issue...**

Exterior brick & metal panels

MEP rough-ins and finishes

Interior finishes

Wood flooring

Bathroom accessories



# Distribution List

---

Dr. Mary Pfeiffer  
District Superintendent  
Neenah Joint School District  
mpfeiffer@nenah.k12.wi.us  
920-751-6800 x 10100

Tim Kippenhan  
Vice President & COO  
Miron Construction Co., Inc.  
Tim.Kippenhan@miron-construction.com  
920-969-7053

Amanda Manteufel  
Project Executive  
Miron Construction Co., Inc.  
Amanda.Manteufel@miron-construction.com  
920-328-1777

Matt Wolfert  
President  
Bray Architects  
mwolfert@brayarch.com  
414-226-0200

Ryan Sands  
Vice President  
Bray Architects  
rsands@brayarch.com  
414-290-1981

Mike Huffman  
President  
Huffman Facility Development  
mhuffman@huffmanfd.com  
608-332-4112

# Executive Summary

## Overview

- Interior and exterior steel studs and sheathing continued throughout the building
- Drywall continues to be hung and finished across the building
- Painting continues in music areas and admin spaces
- Ceiling grid and tile started in the music and admin spaces
- Casework finished in the North classroom wings and started in the music spaces
- Aluminum window frames and glass install continued throughout the building
- Metal wall panels continued to be installed in the courtyards
- MEP in-wall and above ceiling rough-ins continued throughout the building
- Steel railings and stair install continued throughout the building
- Interior masonry walls and exterior brick continue
- Carpet install continued in the North classroom wings
- Wood flooring completed in the auxiliary gym
- Ceramic tile and bathroom finishes continue in the north classroom wings
- MEP install in the auditorium continued

## Major Milestones / Accomplishments

- Wood flooring completed in the auxiliary gym
- Elevator install started on the final elevator
- Start-up of geothermal system

## Upcoming Milestones

- Completion of the auxiliary gym
- Theater equipment install
- Wood flooring in the competition gym

## Key Issues and Concerns

- Material availability and increasing lead times



# Action Items

---

## Key Accomplishments

- North classroom spaces nearly complete
- Start-up of geothermal system

## Areas of Concern

- Material availability
- Material cost increases

## Action Item List

- Continue to monitor material lead times and delivery dates
- Monitoring a long lead time and delivery date for electrical switchgear
- Pre-planning for MEP system start-ups
- Starting to review and collect closeout information
- Coordination with owner furnished equipment



*Learn from each experience,  
challenge historic thinking,  
continually seek a better way,  
and expand our capabilities.*

# Design Items

---

## Areas of Concern / Focus

- Critical to continue to complete submittal revisions and respond to RFI's to maintain the project schedule

## Submittals

- Submittals from Bid Package 01 contractors are being received and reviewed
  - 100% of submittals have been submitted and reviewed
- Submittals from Bid Package 2A, 2B, and 2C contractors are being received and reviewed
  - 100% of submittals have been submitted and reviewed
- Submittals from Bid Package 3A contractors are being received and reviewed
  - 100% of submittals have been submitted and reviewed
- Submittals from Bid Package 3B contractors are being received and reviewed
  - 100% of submittals have been submitted and reviewed
- Submittals from Bid Package 04 contractors are being received and reviewed
  - 100% of submittals have been submitted and reviewed
- Submittals from Bid Package 05 contractors are being received and reviewed
  - 99% of submittals have been submitted and reviewed

## Requests for Information

- 32 RFI's were generated this month and 28 have been answered and returned
- 4 open RFI's that the design team will return in early February



*Get involved, respond with urgency, and work as a team to get the job done. Leverage the strengths of each individual and overcome obstacles as one.*

# Quality

---

## Inspections

- Steel Fireproofing Adhesion Testing
- Above-Ceiling Inspection
- Floor Moisture Testing
- State & Local Building Inspections

## Test Results

- Concrete test reports are being received as areas are completed
- Floor moisture reports are being collected for current and future flooring areas

## Quality Issues & Resolution

- None



*Bring the passion, keep moving forward, and stay focused on the results. Champion the competitive spirit, make the most of every opportunity, and stay hungry.*



# Construction Summary

## Labor Force Report

- Miron Concrete - 6 workers
- Miron Steel - 5 ironworkers
- Miron General Trades - 22 carpenters
- Miron Masonry - 12 masons
- Miron Door & Hardware - 4 carpenters
- Appleton Lathing Corporation - 40 framers and finishers
- Appleton Lathing Corporation - 4 ceiling installers
- Corcoran Paint - 10 painters
- Corcoran Glass - 8 workers
- Tweet Garot - 13 workers
- Hurckman Mechanical - 22 workers
- Blair Fire Protection - 5 workers
- EC&D - 4 workers
- Van Ert - 56 electricians
- Wynn Jones - 4 workers
- Crafts Roofing - 2 roofers
- Muza Sheet Metal - 6 workers
- CM Morris - 2 workers
- Performance Firestop - 2 workers
- HJ Martin - 4 installers
- Resch Tile - 4 installers
- Overhead Door - 2 installers
- Specialty Closures - 2 installers
- Baseman Flooring - 5 workers
- John's Refrigeration - 4 installers
- Prostar Surfaces - 4 installers
- Otis - 4 installers

## Miron Staff

- 8 construction management staff members on site

## Delays

- Weather
  - 0 weather days in January
- Materials & Labor
  - None

## Key Issues / Concerns & Recommended Action Steps

- Continuing to track material lead times
- Tracking weather days to determine any schedule impact



# Risk Management

---

## Key Safety Statements & Focus Issues

While the current workforce onsite has become accustomed to the project safety expectations, it is important to ensure complacency does not settle in. The below safety topics are consistent reminders in contractor coordination meetings.

- 1368 people have been orientated to date
- Approximately 260-280 people on site per-day
- Orientations and background checks completed before being permitted to work on site
- Stretching and safety meeting is daily at 6:00 AM & 7:00 AM with all contractors
- Weekly site-wide stand-down safety meeting
- Daily site safety audits and weekly contractor safety walks
- Safety focus is fall protection and hot work
- Heavy equipment includes: 1 crane, 12 skytraks, 1 front end loader, 1 back hoe, 1 dozer, 10 UTV's, and 36 company vehicles
- Communication is key to the team's success with the amount of equipment moving on site
- Site traffic control is in place due to lots of moving equipment and vehicles on site
- Red danger tape is put up in areas where overhead work and limited access zones are located
- Elevated work permits are submitted and reviewed for each contractor working on the roof
- Changing freeze thaw conditions with daily temperature variations
- Managing snow removal on site
- Air monitoring with temp heat being used across the building

# Progress Photos



Auxiliary gym completed wood floor  
01/16/2023



Completed loading dock  
01/23/2023



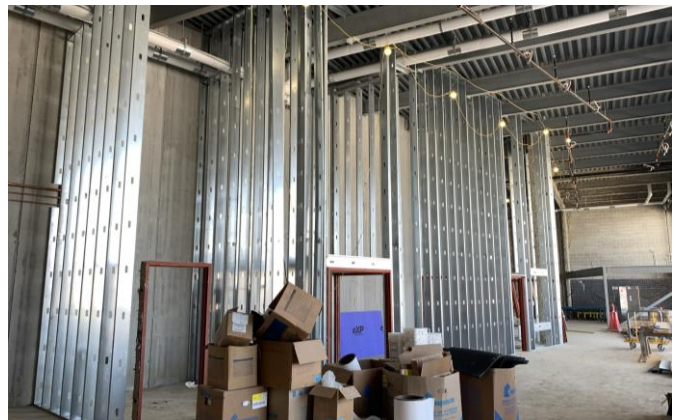
Completed brick on the auto shop  
01/23/2023



Exterior siding on the weight room  
01/23/2023



Black box exterior framing  
01/23/2023



Auditorium lobby walls being framed  
01/23/2023



# Progress Photos



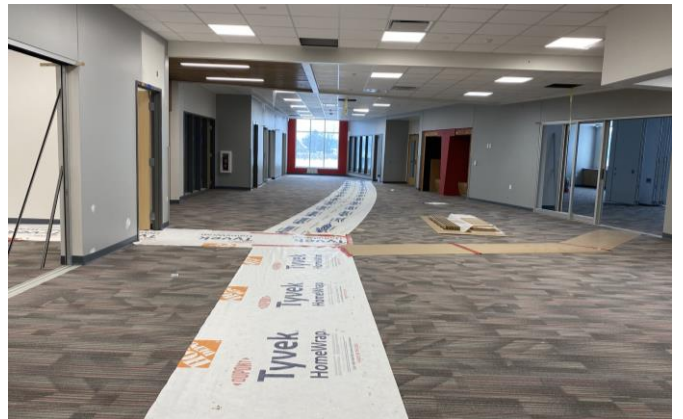
White boards going up in classrooms  
01/23/2023



Wood doors are hung in North classroom wings  
01/23/2023



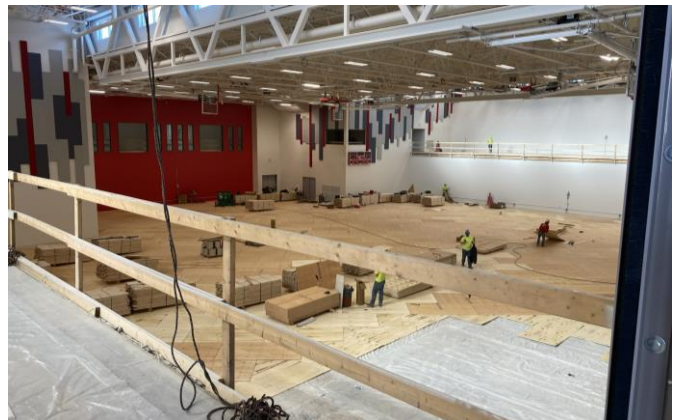
Completed bathroom  
01/23/2023



Nearly completed hallway outside of classrooms  
01/25/2023



Wood flooring acclimates to indoor climate prior to install  
01/25/2023



Competition gym wood flooring begins  
01/31/2023

# Glossary of Terms

---

- **Bid Package (BP):** a set of documents that contains drawings, specifications, and scopes of work for a specific set of construction activities that are sent out to contractors for competitive bidding. Ex: Bid Package 01 contained all the drawings, specifications, and scopes for the exterior site portion of work on the project.
- **Request for Information (RFI):** a document during the construction phase of a project used to get clarification on the project documents between the contractor and the architect/engineer. Ex: The contractor submits an RFI to the architect about a missing dimension on the drawings.
- **Submittal:** documents such as shop drawings, product data, material data, and samples to confirm that the correct products will be installed on the project. Ex: The flooring contractor submits a sample of the carpet they plan to install to ensure it is the correct color.
- **Compaction Report:** a report generated by an engineer noting how dense the ground is in a certain location. Ex: The soil below a road is tested to ensure the soil is firm enough to handle the weight of cars driving over it.
- **Concrete Masonry Unit (CMU):** usually a rectangular prism shaped structural member that is cast or extruded and are comprised of designed aggregates, cement, and water. Ex: The most common occurrence of CMU units are in stairwells of a commercial building. They look like legos stacked on top of one another.
- **Building Information Modeling (BIM):** the process of identifying and resolving constructability issues using 3D models developed by the design team and subcontractors. 3D models are overlaid, conflicts are identified, model adjustments are made, and installation drawings are produced which allow field teams to accurately install their systems to match the final coordinated 3D model.
- **Precast Concrete Wall Panel:** a structural piece of concrete that is cast offsite at a production facility to specific dimensions in a mold, cured for a duration of time, and set in a final location. Precast panels can be used in lieu of a masonry wall, concrete block wall, or steel stud wall. The new high school will have precast wall panels in the auditorium and the auxiliary gym.
- **Slab on Deck (SOD):** a concrete slab that is poured on top of metal decking at an elevated location such as a second or third floor of a building. Together the metal deck and concrete slab make up the floor structure of the building.
- **Slab on Grade (SOG):** a concrete slab that is poured at the ground elevation of the building. This type of slab is poured directly on a compacted stone base.

## Glossary of Terms Continued

---

- **Topping Out:** a topping out ceremony is a construction tradition that has been occurring in some fashion for centuries as a celebration of project milestones. Traditionally, this ceremony occurs when the final structural beam is raised into place, completing the building's frame.
- **MEP:** Mechanical, Electrical, Plumbing
- **Limited Access Zone:** a designated space alongside a newly constructed masonry wall restricting access in the event the wall would fail or collapse. The area is removed once the wall is complete and designed structural integrity is achieved.